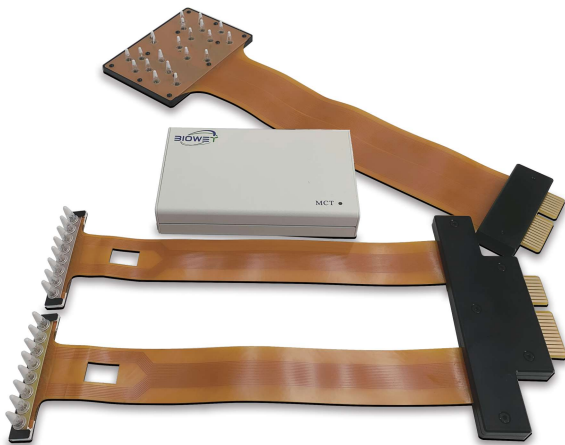


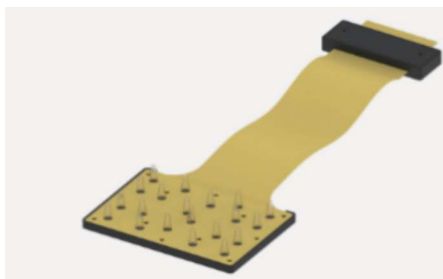
# MCT Temperature Verification System

## Product Description

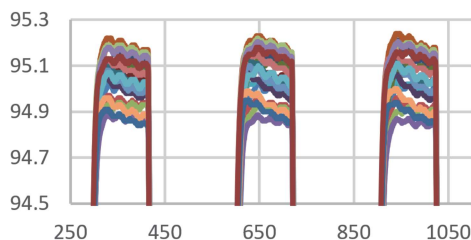
MCT Temperature verification system is a real-time device specially designed to verify the temperature accuracy of laboratory instruments. The device combines a high-precision PT sensor with a signal acquisition system, obtaining high linearity, and fast response, which can monitor the temperature accuracy, uniformity, stability, and ramping rate of PCR equipment in real-time. It is an ideal temperature measuring tool for manufacturers of temperature control equipment, service center of equipment maintenance, and QC laboratories. The equipment is compact and can work with external power supply, which is convenient for on-site inspection.



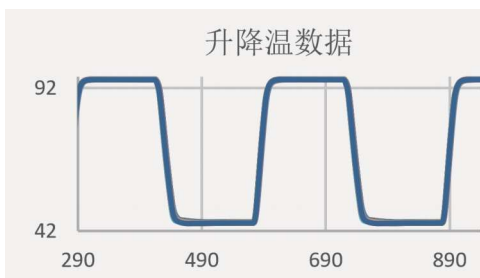
## Product Features



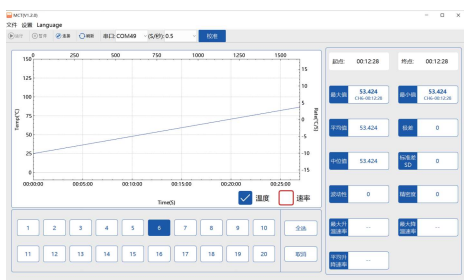
Multiple probes are suitable for tube mode, plate mode and other customized probe. The high-precision PT sensor is wrapped with a Polypropylene tube, which can precisely detect the actual temperature of the PCR reagents in the tube;



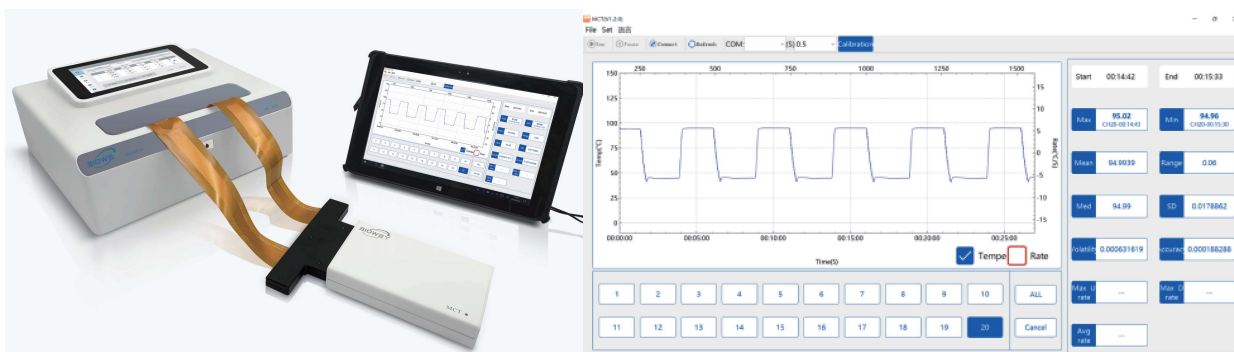
Real-time acquisition in multi-channels allow the detection of temperature deviation between different wells of PCR instrument, effectively monitoring the temperature edge effect of the well plate;



High-speed temperature acquisition up to 20 channels/0.5S, suitable for most real-time data acquisition of ramping rate below 10 °C/S in the PCR tube, without losing temperature data;



The device comes with easy-to-use software and supports temperature accuracy and uniformity measurement in stable period, analysis and measurement of heating and cooling speed, dynamic tracking of temperature curve. It supports temperature curve selection, marking, tracking and data export to excel for further analysis;



## Application

- » Manufacturers of Thermal cycler(PCR), Real-time Quantitative PCR(qPCR), Dry block heater, Incubator, for the instrument temperature calibration in development, production and quality control;
- » On-site installation checking, temperature calibration and instrument performance qualification of PCR, qPCR, Dry block heater, Water Bath, Incubator equipment;
- » Routine maintenance, inspection and calibration of laboratory temperature control equipment;
- » Optimization of temperature control process for PCR reagent development;

## Specification

Specification	Parameter
Temperature Range	0°C~120°C
Channels	Up to 20
Temperature Sensor	PT1000
Temperature Resolution	0.01°C
Compatible Probe	96 microplate,8-strip tube, 12-strip tube, flat plate PCR and available for customized probes
Accuracy	0.01°C
Temperature Stability	< 0.1°C
Temperature Uniformity	< 0.2°C
Linearity	$R^2 > 0.9999$
Acquisition Speed	20 channels/0.5S
Software Function	Real-time display curve, Temperature marking, Dynamic curve tracking, Temperature accuracy, Stability, Uniformity analysis, Ramping rate analysis
Environment	10°C~35°C, humidity 10%~90% (non-condensing)
Storage Temperature	-20°C~60°C
Power	DC5V, 2A,4W
Dimension	100*150*25mm, 0.5Kg

## Order Information

Cat No	Model No	Description	Remark
4001300	MCT	Multi-Channel Temperature Verification System (Main unit, Power supply, USB cable, Software)	
942000	MCT96-20T	96wells -20channel Probe	
942001	MCT8-8T	8wells-8channel Probe	
942002	MCT8-16T	2*8wells-16channel Probe	
942003	MCT96-20F	96wells-20channel flat plate PCR Probe	
		CUSTOMIZED	

